

## YAGI ANTENNA 890 - 960 MHz

**NLOS** None Line of Site Applications

### Features of the 900 MHz Directional Yagi

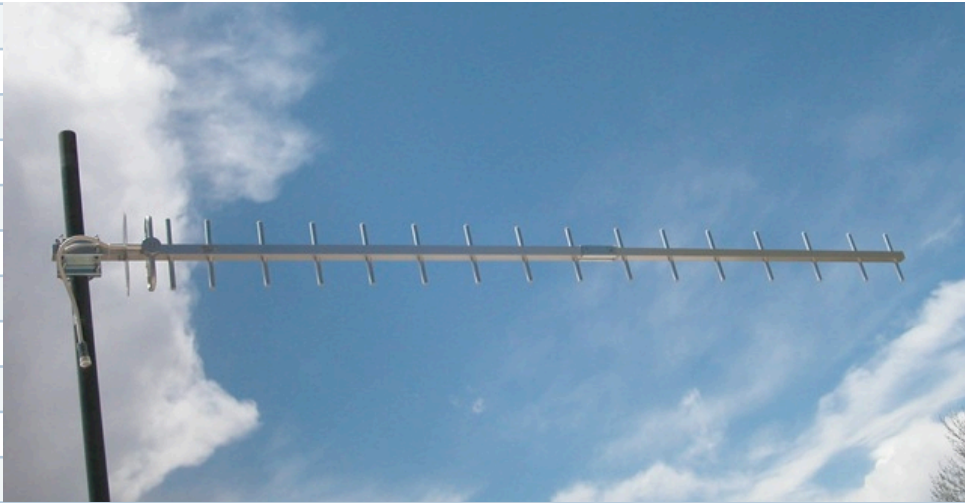
- True to Specification Performance to minimize outside interference
- Industrial Strength Aluminum Construction
- Gripped U Bolts and Stainless Steel Hardware
- Vertical or Horizontal Polarization for easy installation
- 12" quality microwave cable with lifetime warranty Female N Connector
- For use with 1" - 2" Diameter mast/poles (28 - 52 mm)
- 45 to +70 Degrees Centigrade Operating Temperatures
- Use for ISM, WISP, NLOS, Cellular, and Oil/Gas Networks



### SPECIFICATIONS

**YA90018**

Part Number	YA90018
Frequency Range	890 - 960 MHz
Gain	18 dBi
VSWR	1:5:1 Typical
Impedance	50 Ohms
Maximum Power	150 Watts
Beamwidth	23H 25E
Front to Back Ratio	25 dB minimum
Structure	20 Elements
Wind Velocity	210 km/h



Shipped Direct from Manufacturer

One Year Warranty, Repair or Replacement, Provided by Manufacturer

[www.1wirelessway.com](http://www.1wirelessway.com)