

## YAGI ANTENNA 890 - 960 MHz

**NLOS** None Line of Site Applications

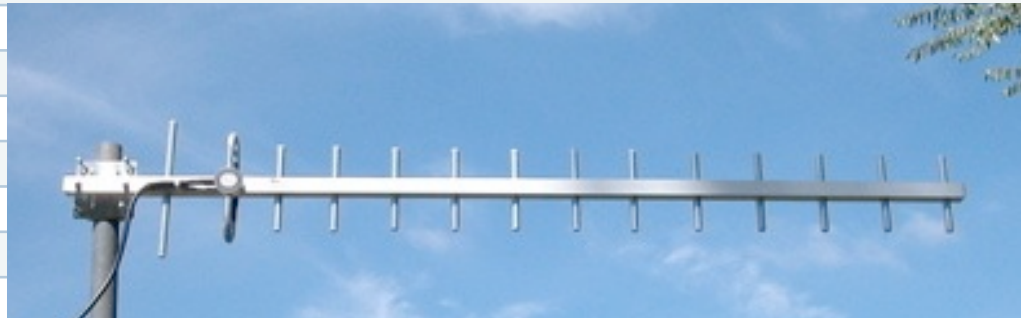
### Features of the 900 MHz Directional Yagi

- True to Specification Performance to minimize outside interference
- Industrial Strength Aluminum Construction
- Grippered U Bolts and Stainless Steel Hardware
- Vertical or Horizontal Polarization for easy installation
- 12" quality microwave cable with lifetime warranty Female N Connector
- For use with 1" - 2" Diameter mast/poles (28 - 52 mm)
- 45 to +70 Degrees Centigrade Operating Temperatures
- Use for ISM, WISP, NLOS, Cellular, and Oil/Gas Networks



### SPECIFICATIONS

**YA90014**



Part Number	YA90014
Frequency Range	890 - 960 MHz
Gain	14 dBi
VSWR	1:5:1 Typical
Impedance	50 Ohms
Maximum Power	150 Watts
Beamwidth	32H 30E
Front to Back Ratio	19 dB minimum
Structure	14 Elements
Wind Velocity	210 km/h

Shipped Direct from Manufacturer

One Year Warranty, Repair or Replacement, Provided by Manufacturer

DC Ground

[www.1wirelessway.com](http://www.1wirelessway.com)