

YAGI ANTENNA 698 - 780 MHz

NLOS None Line of Site Applications

Features of the 700 MHz Directional Yagi

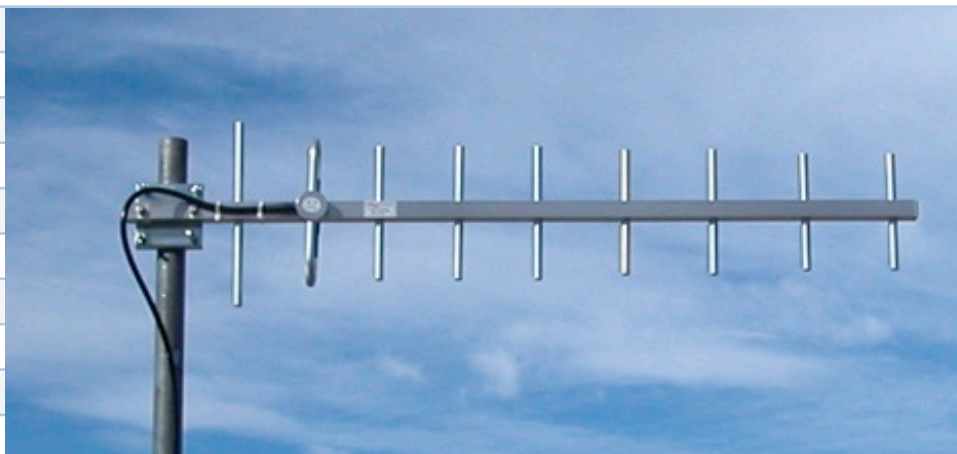
- True to Specification Performance to minimize outside interference
- Industrial Strength Aluminum Construction
- Gripped U Bolts and Stainless Steel Hardware
- Vertical or Horizontal Polarization for easy installation
- 12" quality microwave cable with lifetime warranty Male F Connector
- For use with 1" - 2" Diameter mast/poles (28 - 52 mm)
- 45 to +70 Degrees Centigrade Operating Temperatures
- Use for 700 MHz Networks - DOCSIS Compatible
- Available in 50 Ohm version, Female N Connector



SPECIFICATIONS

YA70012F

Part Number	YA70012F
Frequency Range	698 - 780 MHz
Gain	7 dBi
VSWR	1:5:1 Typical
Impedance	75 Ohms
Maximum Power	150 Watts
Beamwidth	40H 35V
Front to Back Ratio	16 dB minimum
Structure	9 Elements
Wind Velocity	210 km/h



Shipped Direct from Manufacturer

One Year Warranty, Repair or Replacement, Provided by Manufacturer

DC Ground

www.1wirelessway.com