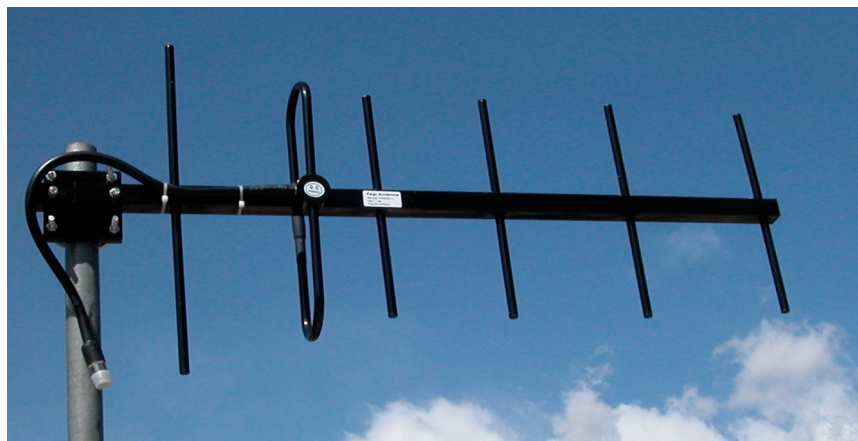


YAGI ANTENNA 450 - 470 MHz

EXTREME ENVIRONMENTS - EXTRA HEAVY DUTY SERIES
Rugged Construction for the most harsh and severe installations

Features of the 450 MHz Directional Yagi

- Heavy Duty Stainless Steel Construction
- Solid Iron Mounting Bracket
- 360 Degree Weld Elements to Boom
- Black Polyester Powder Coat Finish
- Lifetime Warranty Female N Connector
- High Quality LMR400 Cable
- Waterproof Gamma Match
- PVC Heat Shrink on Connector
- Vertical or Horizontal Polarization
- Gains Available: 9, 11, 12, 14 dBi
- Cable Lengths Available: Standard 2', 15' or 25'
- Minimum Order Requirements
- www.1wirelessway.com



Shipped Direct from Manufacturer

One Year Warranty, Repair or Replacement, Provided by Manufacturer

NLOS None Line of Site Applications



SPECIFICATIONS

Part Number	YA45012W
Frequency Range	216 - 226 MHz
Gain	12 dBi
Front to Back Ratio	16 dB minimum
Beamwidth	55H 40V
VSWR	1.5:1 Typical
Input Impedance	50 Ohms
Maximum Power	150 Watts
Connector Interface	N Type Female
Windload	210 KM/130MPH
Polarization	Vertical or Horizontal
Lightning Protection	Direct Ground
Structure	7 Elements
Mast Sizes Compatible	1.5"-2.0" 40-50mm
Double U Bolt Mounting	S/S Hardware
Standard Cable Length	2'/610mm
15' Cable Length	YA45012W-15
25' Cable Length	YA45012W-25

450 MHz Photo may not be exact model