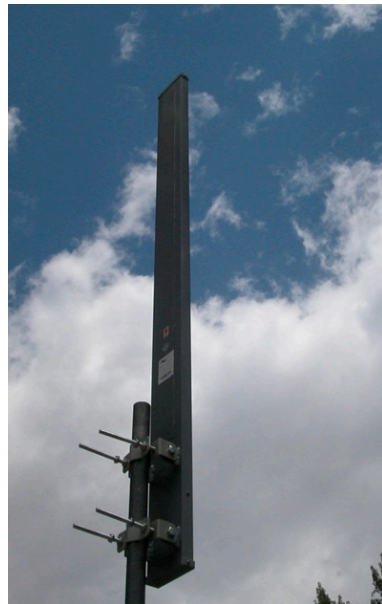


OMNI ANTENNA 930 - 960 MHz

Features of the 930 MHz Omni Directional Antenna

- True to Specification Performance to minimize outside interference
- High Performance Design Eliminates Nulls - Wave Guide Design
- Extra Strong Aluminum Construction - Waterproof
- Powder Coated Enclosure for rough environments
- Horizontal Polarization - IEEE 802.11 Compatible
- Lifetime Warranty 7/16 DIN Connector
- For use with 1.5" - 3.5" Diameter mast/poles (40 -90 mm)
- 45 to +70 Degrees Centigrade Operating Temperatures
- DC Ground for Lightning Protection
- Rugged Double Clamping Hardware System SS Hardware
- Use for 900 MHz Networks - WISP - ISM - NLOS



Shipped Direct from Manufacturer

One Year Warranty, Repair or Replacement, Provided by Manufacturer

OMNI

NLOS

Base Station



SPECIFICATIONS

Part Number	OM9306H
Frequency Range	930 - 960 MHz
Gain	6 dBi
VSWR	1:5:1 Typical
Impedance	50 Ohms
Maximum Power	250 Watts
Beamwidth	27.5 E
PIM	<107
Structure	Aluminum One Element
Wind Velocity	130 mph/210 km

DC Ground Photo may not be exact model

www.1wirelessway.com