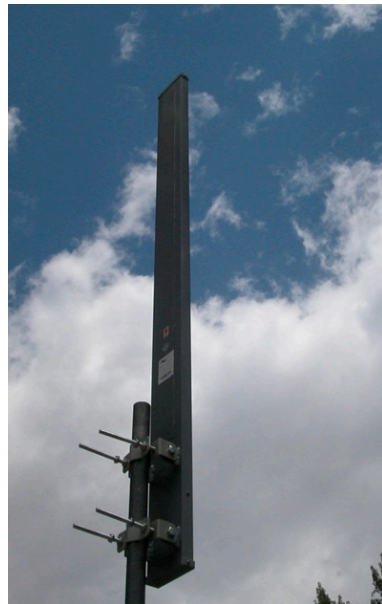


OMNI ANTENNA 900 - 930 MHz


Features of the 900 MHz Omni Directional Antenna

- True to Specification Performance to minimize outside interference
- High Performance Design Eliminates Nulls
- Extra Strong Aluminum Construction - Waterproof
- Powder Coated Enclosure for Rough Environments
- Horizontal Polarization - IEEE 802.11 Compatible
- Lifetime Warranty 7/16 DIN Connector
- For use with 1.5" - 3.5" Diameter mast/poles (40 - 90 mm)
- 45 to +70 Degrees Centigrade Operating Temperatures
- DC Ground for Lightning Protection
- Rugged Double Clamping Hardware System SS Hardware
- Use for 900 MHz Networks - WISP - ISM - NLOS



Shipped Direct from Manufacturer

One Year Warranty, Repair or Replacement, Provided by Manufacturer

	OMNI	NLOS
	Base Station	None Line of Sight
		
SPECIFICATIONS		
Part Number	OM9006H	
Frequency Range	900 - 930 MHz	
Gain	6 dBi	
VSWR	1:5:1 Typical	
Impedance	50 Ohms	
Maximum Power	250 Watts	
Beamwidth	27.5 E	
PIM	<107	
Structure	Aluminum One Element	
Wind Velocity	130mph/210kmh	
DC Ground	Photo	may not be exact model
		www.1wirelessway.com